

Lu Ann Henderson
GQ North Real Estate
Senior Vice President
(916) 798-8559
Luann@GQNorth.com
Lic: DRE# 01912126

MatrixCRE.ai Virtual Tour
(415) 982-9496
Luann@GQNorth.com

MatrixCRE AI
(415) 982-9496
info@matrixcre.ai

OFFERING MEMORANDUM



5124 Walnut Ave
Sacramento, CA 95841

For Sale - Live / Work Warehouse Opportunity

APPROX. 2,000 SF WAREHOUSE / 3 BD/ 2 BA HOUSE ON 0.52 ACRES

GQNorth
real estate

For Sale - Live / Work Warehouse Opportunity

CONTENTS

01 Executive Summary

Investment Summary

02 Location

Location Summary

Locator Map

Regional Map

Aerial Map

Drive Times (Heat Map)

03 Property Description

Property Features

Property Images

04 Company Profile

Advisor Profile

Exclusively Marketed by:



Lu Ann Henderson

GQ North Real Estate
Senior Vice President
(916) 798-8559
Luann@GQNorth.com
Lic: DRE# 01912126



MatrixCRE.ai

MatrixCRE.ai Virtual Tour

(415) 982-9496
Luann@GQNorth.com



MatrixCRE.AI

MatrixCRE AI

(415) 982-9496
info@matrixcre.ai



GQNorth
real estate



01

Executive Summary

Investment Summary

FOR SALE - LIVE / WORK WAREHOUSE OPPORTUNITY

OFFERING SUMMARY

| | |
|-------------------------|--|
| ADDRESS | 5124 Walnut Ave Sacramento CA 95841 |
| COUNTY | Sacramento |
| APN | 230-0511-034-0000 |
| MARKET | Sacramento |
| PROPERTY YARD AREA (AC) | 0.52 |
| ZONING | Zoned LC |
| PROPERTY USE | Warehouse / House |
| APN | 230-0511-034-0000 |

FINANCIAL SUMMARY

| | |
|----------------|-----------|
| OFFERING PRICE | \$795,000 |
|----------------|-----------|

| DEMOGRAPHICS | 1 MILE | 3 MILE | 5 MILE |
|------------------------|----------|----------|-----------|
| 2024 Population | 22,515 | 166,364 | 389,623 |
| 2024 Median HH Income | \$63,589 | \$75,552 | \$79,101 |
| 2024 Average HH Income | \$82,448 | \$98,411 | \$105,671 |

Approx. 2,000 SF Warehouse Including an approx. 1,380 SF Newly Rebuilt House

- Discover the potential of this extraordinary commercial mixed-use property on 0.52 acres. Priced at \$795,000.00. Indulge in the luxury of newly rebuilt home with brand new windows, bathrooms, new concrete epoxy floors and a fresh roof. an upgraded 200 amp power panel. Upgraded amenities including a 5-head split system for heating/air, washer/dryer hookups, outdoor hot and cold water, and copper pipes throughout the entire house. Nestled on a vast 0.52-acre private compound, this property is zoned LC, offering a possible live-work setting. Conveniently located near I-80. The price includes three 40ft shipping containers, providing a total of 680 SF of secure storage. Two electric entry gates.

LU ANN HENDERSON

SENIOR VICE PRESIDENT

DRE# 01912126

Commercial Real Estate Sales And Leasing

- San Francisco (415) 982-9496
- Sacramento (916) 798-8559
- info@matrixcre.ai

- The warehouse is currently divided into three separate units, which can be combined to form a single, larger warehouse. The warehouse features three rollup doors, epoxy flooring in some rooms, offering durability and easy maintenance. It has its out restroom with door entrance for both inside and outside. The seller is willing to give you epoxy throughout if requested.
- This is a commercial property with SFR use; however, this needs to be financed for commercial use only. NO residential financing will be allowed per several lenders and appraisers. The due diligence on the requirements has all been done. The lot is 0.52 acres, surrounding buildings are commercial, the zoning is Light Commercial (LC) and the warehouse is approximately 2,000 SF larger than the house. No exceptions. Possible seller financing with a minimum of \$425,000.00 down and credit approval. Call for details, Lu Ann Henderson (916) 798-8559.

Zoning Uses - Please verify with county of Sacramento

- Alcohol & Food Uses (4)
 - Catering Service
 - Liquor Store
 - Restaurant (Carry-out / Drive-through / Sit-down)
 - Small Wineries / Specialty & Craft Breweries
 - Animal & Pet Services (2)
 - Animal Grooming, Short-Term Boarding
 - Veterinarian Animal Hospital
- Business & Professional Services (4)
 - General Business Service
 - General Financial Institutions
 - Laboratory – Medical, Dental, Optical
 - Office Use, General
- Care & Health Services (4)
 - Adult Day Care Center
 - Ambulance Service
 - Child Day Care Center
 - Veterinarian Animal Hospital
- Community / Civic Uses (7)
 - Art Gallery / Art Studio
 - Community Garden
 - Event Center / Reception Hall
 - Government and Local Agency Buildings and Uses
 - Places of Worship / Religious Institution
 - Private Social Center, Club, or Lodge
 - School, K-12 (Public)
- Personal Services (5)
 - Beauty or Barber Shop / Spa
 - Driving Instruction
 - General Personal Services
 - Massage Establishment
 - Self-Service Laundromat

- Repair Services (2)
 - Auto Repair – Minor
 - General Repair Services

Residential Uses (9)
Congregate Care Facility
Dwelling, Multifamily (=10 units)
Dwelling, Single-family Attached (=10 lots)
Dwelling, Single-family Attached (>10 lots)
Family Day Care Home
Low Barrier Navigation Center
Residential Care Home (=6 residents)
Residential Care Home (7–20 residents)
Transitional / Supportive Housing

Retail & Commercial Uses (4)
Auto Broker
General Retail Sales (=49,999 sq. ft.)
General Retail Sales (50,000–350,000 sq. ft.)
Nursery

Utilities & Infrastructure (7)
Convenience Recycling Facility
Eligible Facility WCF
Hydrogen Fueling Station
Major Utility
Minor Utility
Parking Lot or Garage
Small Cell WCF (Attached)



02

Location

- Location Summary
- Locator Map
- Regional Map
- Aerial Map
- Drive Times (Heat Map)

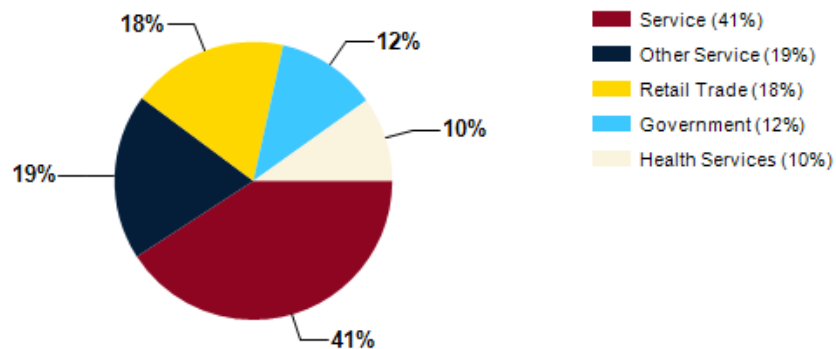
Madison Ave / Auburn Blvd

- The property is located in the bustling area of North Sacramento, known for its vibrant mix of residential and commercial spaces. Residents enjoy the Conveniently located and varying retail businesses and restaurants including, Verizon, Domino's Pizza, Wells Fargo, GameStop H&R Block, 7-11. and Chipotle. A new Starbucks is currently underway right across the street.

Freeway Access

- This property is centrally located just a few minutes from the I-80 / Madison Ave exit, AND the Watt Ave, and Capital Freeway entrance. It is also centrally located to catch a few freeways for your convenience.

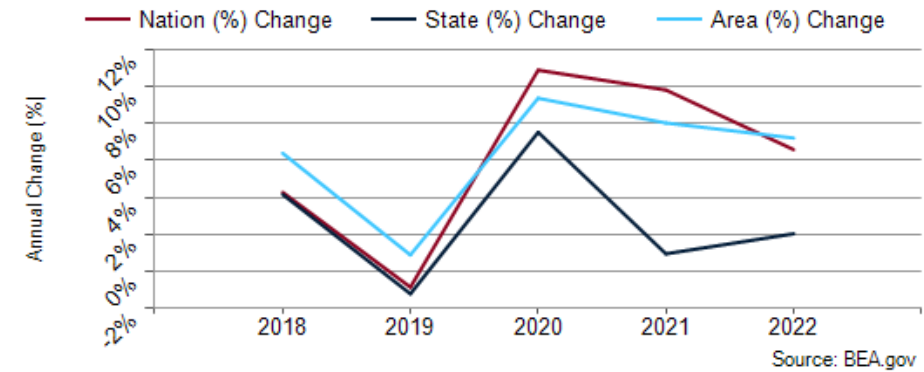
Major Industries by Employee Count

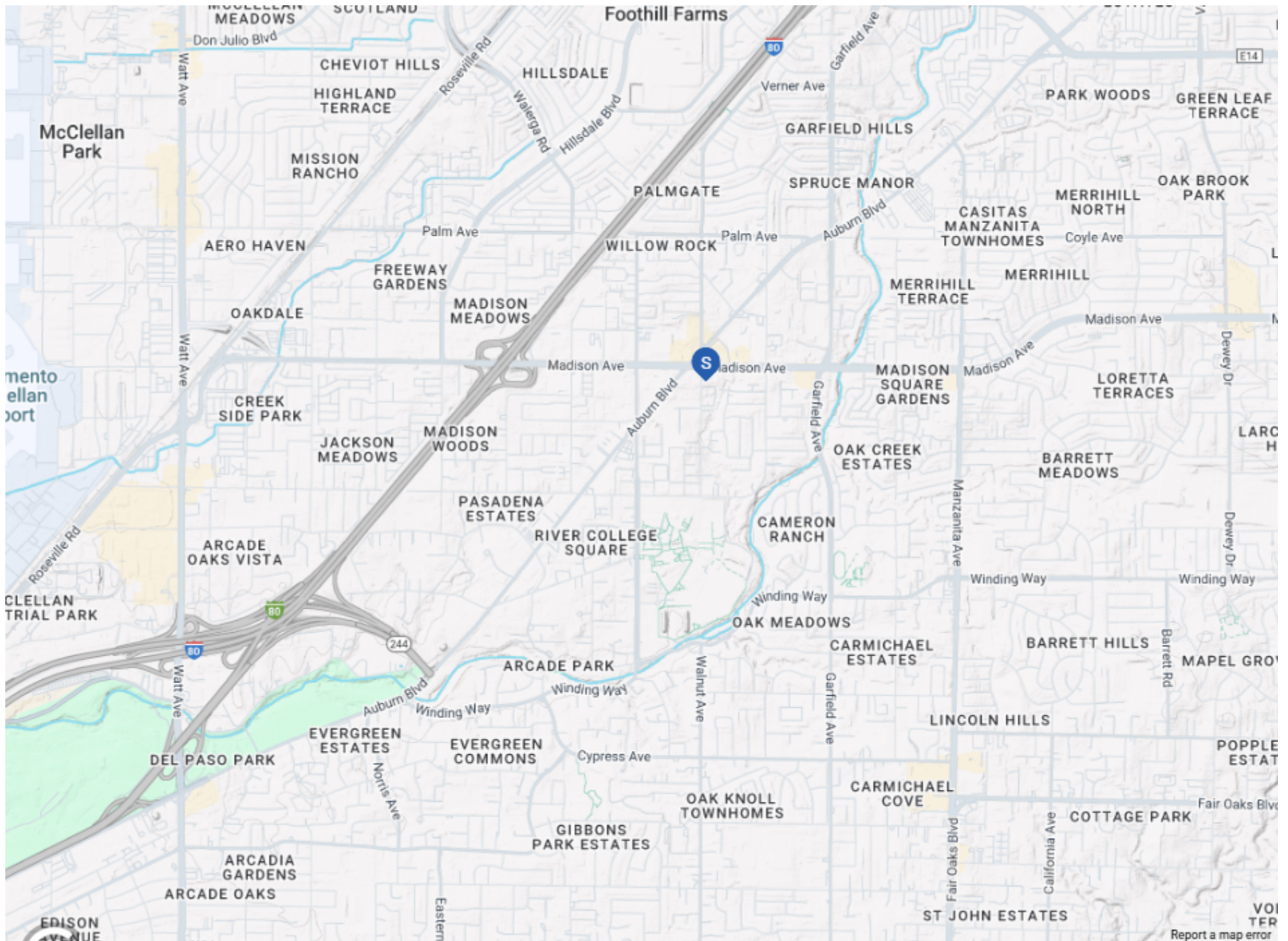


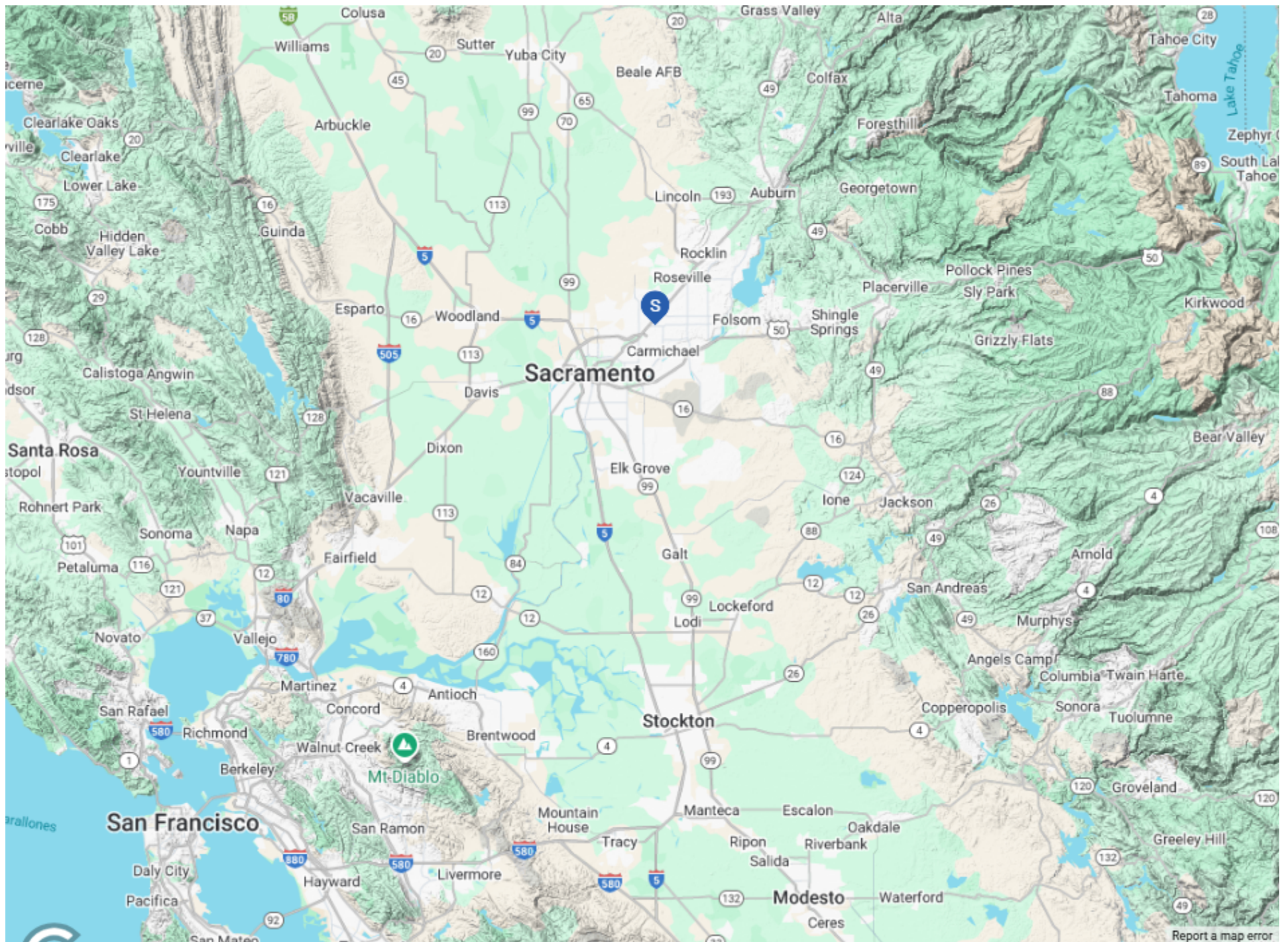
Largest Employers

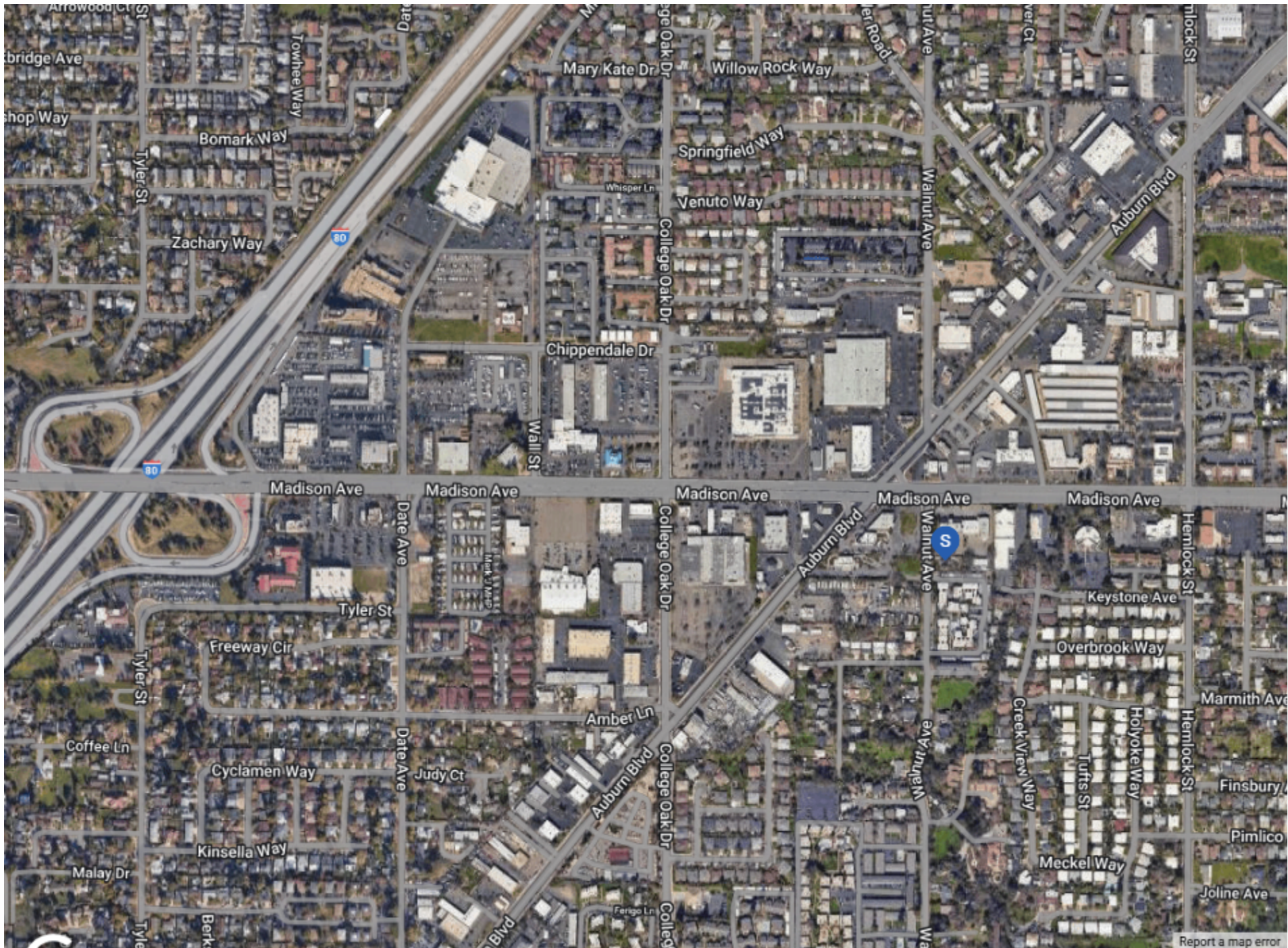
| | |
|---|---------|
| State of California | 107,876 |
| UC Davis Health | 16,075 |
| Sutter Health | 53,000 |
| Sacramento County | 13,252 |
| Kaiser Permanente | 10,934 |
| U.S. Government | 10,507 |
| Dignity Health/Catholic Healthcare West | 7,353 |
| Intel | 5,000 |

Sacramento County GDP Trend













03

Property Description

Property Features

Property Images

PROPERTY FEATURES

| | |
|-------------------------|-----------------------------|
| NUMBER OF UNITS | 2 |
| PROPERTY YARD AREA (AC) | 0.52 |
| BUSINESS NAME | Monument signage |
| ZONING | Zoned LC |
| PROPERTY USE | Warehouse / House |
| ENTRY GATES | 2 Electric Gates |
| YEAR BUILT | 1981 |
| POWER HOUSE | 200 AMP / 220V Single Phase |
| POWER WAREHOUSE | 200 AMP / 220V Single Phase |
| NUMBER OF BUILDINGS | 2 |
| NUMBER OF STORIES | 1 |
| ZONING TYPE | LC |
| FENCING | Yes Compound |
| GROUNDS | Park Like Setting |
| NUMBER OF INGRESSES | 1 |
| NUMBER OF EGRESSES | 1 |

HOUSE - APPROX. 1,380 SF

| | |
|---------------------------|---------------------------------|
| VACANT AT COE | Yes |
| BEDROOMS / BATHROOM | 3 / 2 |
| UNLIMITED HOT WATER | On Demand Water Heater |
| WASHER/DRYER | Yes included / Electric |
| NUMBER OF UNITS | 1 |
| NEW COOLING / HEATING | Yes 5-head split system |
| NEW ROOF / NEW INSULATION | Yes |
| ALL NEW APPLIANCES | Yes |
| ALL NEW CABINETS | Yes |
| WATER | New softener / Purifier |
| COPPER PLUMBING | All New |
| WINDOWS | All New Windows |
| NEW EFIS | Exterior Foam Insulation System |

NEIGHBORING PROPERTIES

| | |
|-------|----------------------------|
| NORTH | FED X / Upcoming Starbucks |
| WEST | Chipotle / Mc Donalds |
| SOUTH | Apartments |
| EAST | Commercial Buildings |

WAREHOUSE - APPROX. 2,000 SF

| | |
|---------------------|-----------------------------|
| FOUNDATION | Concrete |
| FRAMING / ROOF | Metal |
| BATHROOM | 1 |
| RV PARKING SURFACE | AMPLE room for several RV's |
| THREE ROLL UP DOORS | 12 x 10 / 2 Man doors |
| COOLING / HEATING | Three Split Systems |
| VENTILATION SYSTEMS | Yes / Insulated Building |
| FLOORING | Epoxy Floors in some areas |



Take an Instant Walkthrough

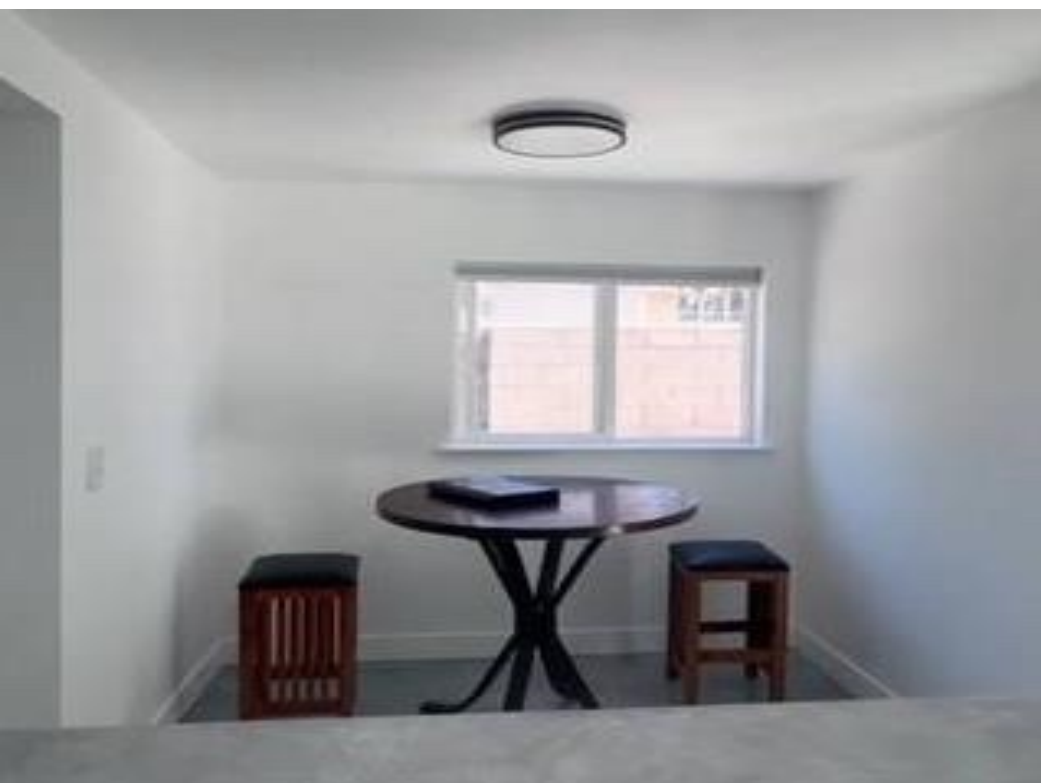
<https://www.youtube.com/@matrixCREAI>



















04

Company Profile

Advisor Profile



Lu Ann Henderson
Senior Vice President

Lu Ann Henderson is an exclusive Commercial Real Estate listing agent serving California. She has a vast network of business owners and investors and a continuous pool of qualified buyers and tenants seeking quality real estate.

Eighty percent of her sales and leasing transactions are dual agency, which expedites transactions and reduces overall commission costs. Lu Ann has been recognized as a top producer by CoStar/LoopNet. She has received the Top-Performing Broker award in Crexi's Annual Platinum Broker Awards and is responsible for over \$40 million in California sales alone.

She selectively manages several listings, ensuring each client receives personal attention and thorough due diligence. Lu Ann has a proven strategy and specialization in various sectors of business real estate, including industrial, retail shopping centers, mixed-use, residential, office, land development, and specialty assets, which contributes to her status in the top 5 percent of brokers by transaction volume.

Lu Ann is committed to advising you on effective strategies for selling or leasing your property. She focuses on transparent and ethical dealings and wants to alleviate the pressures associated with property transactions.

Lu Ann leverages digital marketing platforms and social media, including commercial real estate platforms, to maximize your property's exposure. She also manages a YouTube channel, MatrixCRE.ai, to showcase each listing and enhance global visibility.

If you seek high-quality advice and result-oriented brokerage services, please call or email her at Infor@MatrixCRE.ai and visit the website at MatrixCRE.ai.

For Sale - Live / Work Warehouse Opportunity

CONFIDENTIALITY and DISCLAIMER

The information contained in the following offering memorandum is proprietary and strictly confidential. It is intended to be reviewed only by the party receiving it from GQ North Real Estate and it should not be made available to any other person or entity without the written consent of GQ North Real Estate.

By taking possession of and reviewing the information contained herein the recipient agrees to hold and treat all such information in the strictest confidence. The recipient further agrees that recipient will not photocopy or duplicate any part of the offering memorandum. If you have no interest in the subject property, please promptly return this offering memorandum to GQ North Real Estate. This offering memorandum has been prepared to provide summary, unverified financial and physical information to prospective purchasers, and to establish only a preliminary level of interest in the subject property.

The information contained herein is not a substitute for a thorough due diligence investigation. GQ North Real Estate has not made any investigation, and makes no warranty or representation with respect to the income or expenses for the subject property, the future projected financial performance of the property, the size and square footage of the property and improvements, the presence or absence of contaminating substances, PCBs or asbestos, the compliance with local, state and federal regulations, the physical condition of the improvements thereon, or financial condition or business prospects of any tenant, or any tenant's plans or intentions to continue its occupancy of the subject property.

The information contained in this offering memorandum has been obtained from sources we believe reliable; however, GQ North Real Estate has not verified, and will not verify, any of the information contained herein, nor has GQ North Real Estate conducted any investigation regarding these matters and makes no warranty or representation whatsoever regarding the accuracy or completeness of the information provided. All potential buyers must take appropriate measures to verify all of the information set forth herein. Prospective buyers shall be responsible for their costs and expenses of investigating the subject property.

Exclusively Marketed by:



Lu Ann Henderson

GQ North Real Estate
Senior Vice President
(916) 798-8559
Luann@GQNorth.com
Lic: DRE# 01912126



MatrixCRE.ai

MatrixCRE.ai Virtual Tour

(415) 982-9496
Luann@GQNorth.com



MatrixCRE.AI

MatrixCRE AI

(415) 982-9496
info@matrixcre.ai



GQNorth
real estate